



Forensicare

## **Forensicare- Mental Health Behind Bars**

**Anthea Lemphers – Executive Director, Community Operations**

# Objectives of presentation

- Increased knowledge about Forensicare and its services
  - Community Forensic Mental Health Service
  - Prison Services
  - Thomas Embling Hospital
  - Research and Education
- Understand the role of Forensicare in the forensic mental health system



Forensicare

# Forensicare

- Forensicare was established under the *Mental Health Act 2004* to provide forensic mental health services in Victoria
- In 1998 the Institute of Forensic Mental Health assumed responsibility for the provision of forensic mental health services under the business name of "Forensicare"
- Agency of the Victorian Government
- Primarily report to the Minister for Mental Health, but also have responsibilities to the Minister for Corrections
- Approx 900 staff
- Forensicare's Model of Care - empowering Victorians living with mental illness to lead safe and meaningful lives free from offending



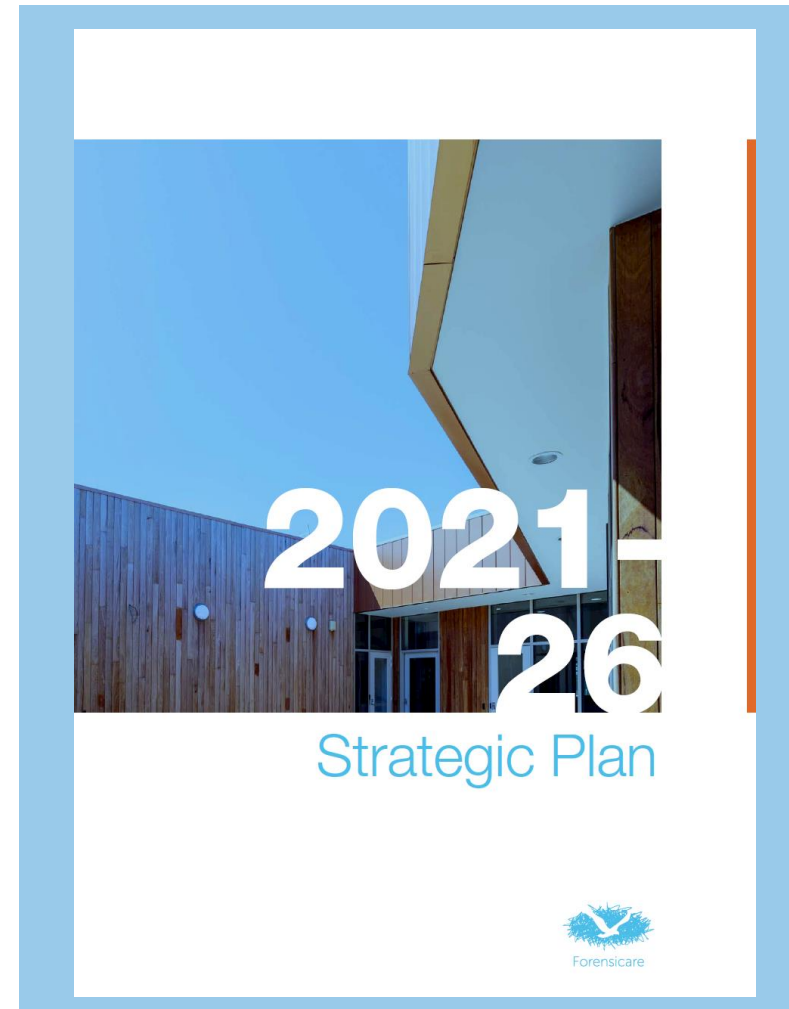
# Strategic Plan 2021-2026

## Our Vision

- Meaningful lives led safely
- Hope in recovery
- Connected Care

## Our Mission

Empower recovery for all Victorians living with mental illness who are at risk of entering or who have entered the justice system, to lead safe and meaningful lives free from offending.



# Our services



Thomas Embling  
Hospital



Prison Services



Community  
Services



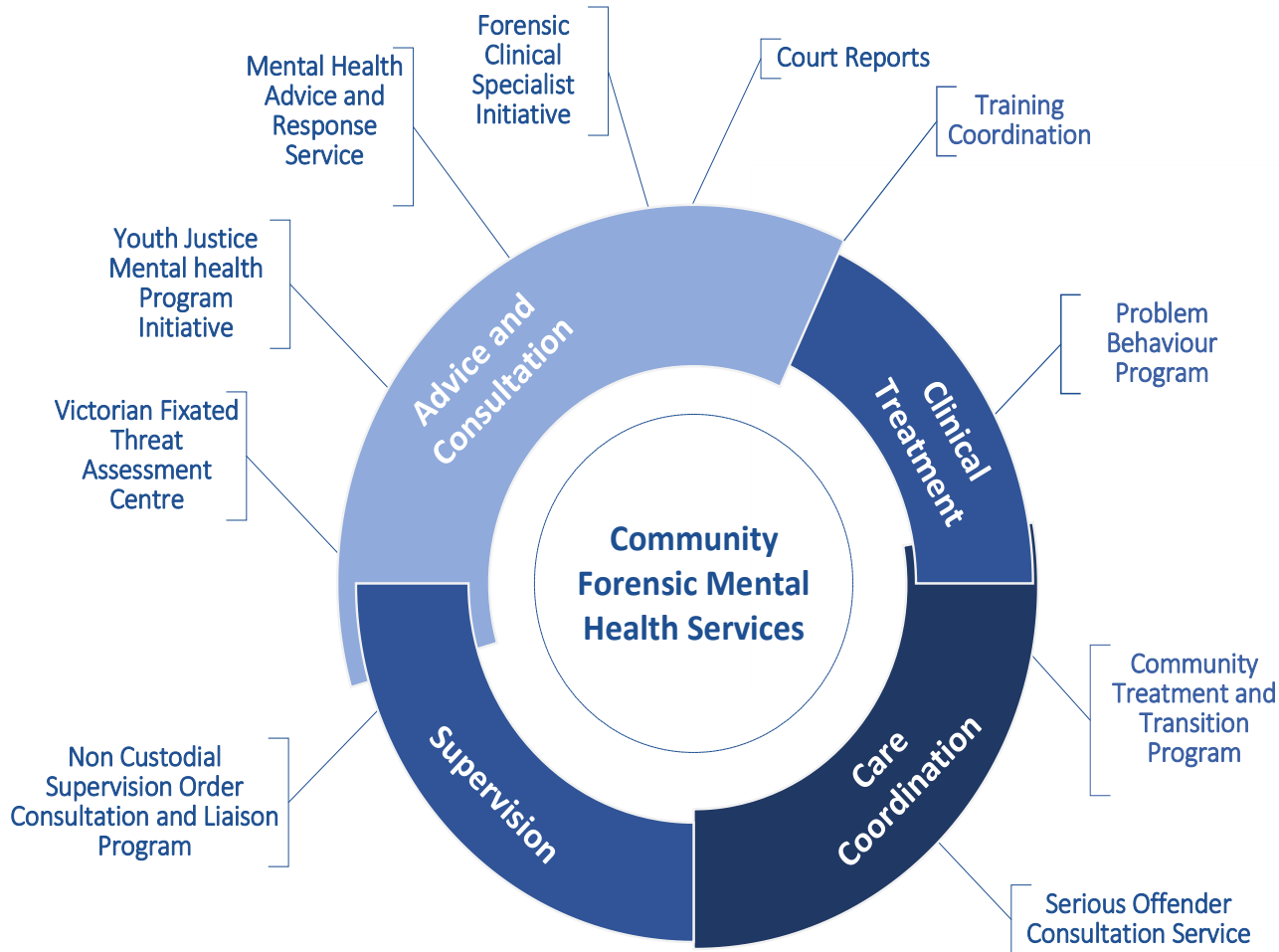
Research and  
education



Forensicare



# Community Forensic Mental Health Service



- Offer community-based specialist care and treatment to people living with serious mental illness who have offended, or are at risk of offending
- Services are provided statewide
- Focus on risk assessment and management, provision of reports, primary and secondary consultation and specialist training
- Balance of clinical services and community safety
- RCVMHS recommendations and future expansion of CFMHS programs
- Services include:

- Community Transition and Treatment Program
- Non-Custodial Supervision Order Consultation and Liaison Program
- Problem Behaviour Program
- Court Mental Health and Response Service
- Forensicare Serious Offender Consultation Services

- Mental Health Advice and Response Service



Forensicare

# Public Prison Services



- Forensicare provides mental health services on a voluntary basis within many of Victoria's prisons.
- This includes:
  - Mental health reception assessments
  - Correctional units dedicated to mentally unwell prisoners
  - Clinic-based and mobile forensic mental health services
  - Suicide and self-harm prevention and assessment services.
- 141 prison placements to support more intensive mental health treatment in prison.

# Forensicare – Prison services

Our prison service locations include:

- **Acute Assessment Unit (Melbourne Assessment Prison)**— a 16-bed short stay unit
- **Ballerit Yeram-boo-ee Forensic Mental Health Unit (Ravenhall Correctional Centre)**—75 prisons-based mental health beds, assessments and outpatients services
- **Marmak Unit (Dame Phyllis Frost Centre)**—a 20-bed residential unit
- **Mobile Forensic Mental Health Service (Metropolitan Remand Centre)**—a mobile forensic mental health service. Outpatient services to Barwon, Marngoneet and Kareenga prisons.
- **St Paul's Unit (Port Phillip Prison)**—a 30 prison-based bed unit
- **Other outpatient services**—Visiting sessions at Hopkins, Langi Kal Kal and Loddon prisons, as well as sessions by visiting psychiatrists at Hopkins, Barwon, Dhurringile, Karreenga, Loddon, Marngoneet, Middleton and Tarrengower prisons.



Forensicare



# Thomas Embling Hospital

- Secure forensic mental health hospital with 136-beds
- Provide care and treatment across eight units spanning intensive, acute, sub-acute, extended rehabilitation and transitional rehabilitation.
- Patients are admitted from the criminal justice system, either via sentencing from a court or directly from prison.



# Thomas Embling Hospital - Bed Expansion Project

## \$349.6m Funded in state budget – 82 beds

- New women's precinct in a multi-storey 34-bed high, medium and low security facility
- New men's facility in a multi-storey 48-bed medium security facility
- Refurbishment of the Barossa Unit into a men's unit (once the women transition across to the new unit) and minor refurbishment of the Jardine unit.
- This is the first stage of an overall masterplan to achieve the royal commission recommendation to:
  - Refurbish the existing 136 beds; and
  - Provide an additional 107 beds.



Architectural Rendering of the new buildings.

# Research

- Centre for Forensic Behavioural Science (CFBS), a research and training centre run in partnership with Swinburne University of Technology
- Comprehensive forensic mental health research program looking at:
  - Aggression and violence
  - Forensic mental health
  - Rehabilitation, reintegration & offender management
  - Complex criminal behaviour
  - Psychology and legal processes
  - Child maltreatment & youth offending
  - Culture, psychology and law.
- Offers professional education and training
- Post-graduate courses in forensic mental health and forensic behavioural science



Centre for Forensic  
Behavioural Science



# The Nexus between Mental Health and Justice

1 in 5

or **1.2 million Victorians** suffer from a mental illness

3%

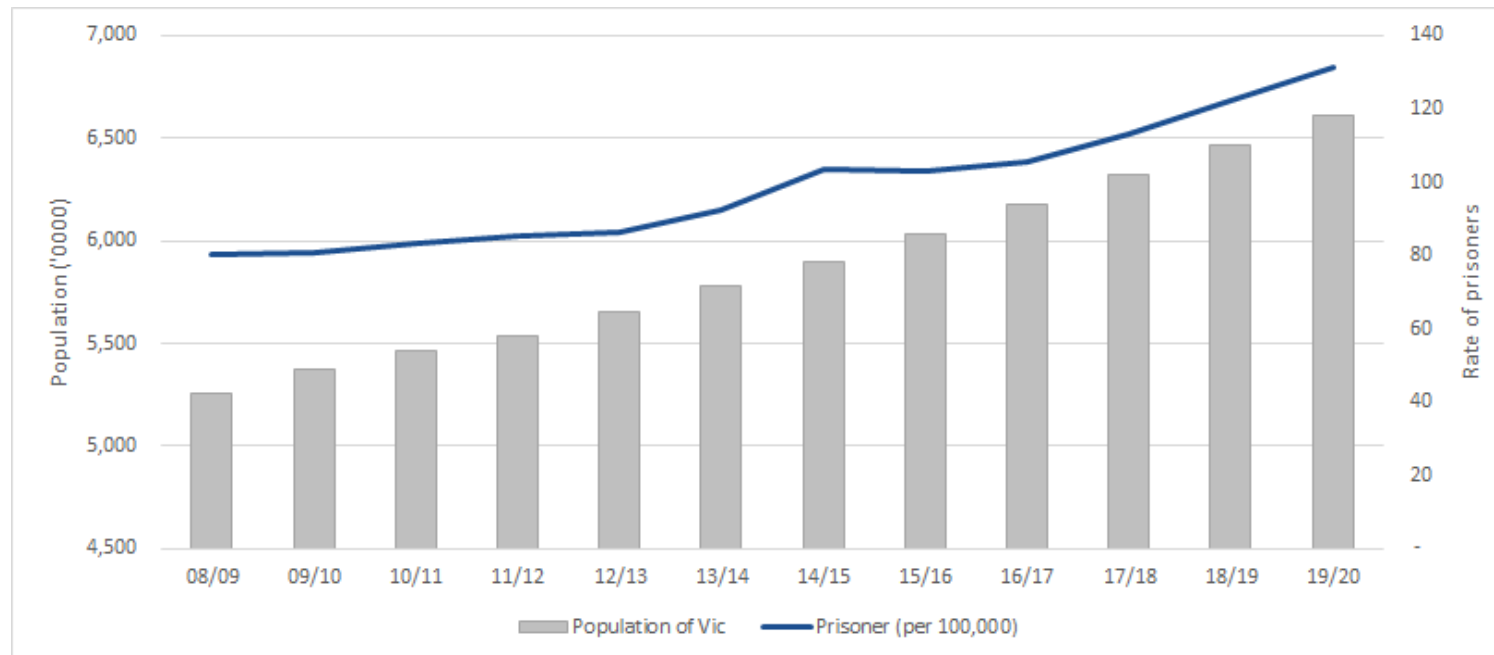
of these 1.2 million people will **experience severe mental illness**

~61%

of people entering Victorian prisons have a mental health diagnosis

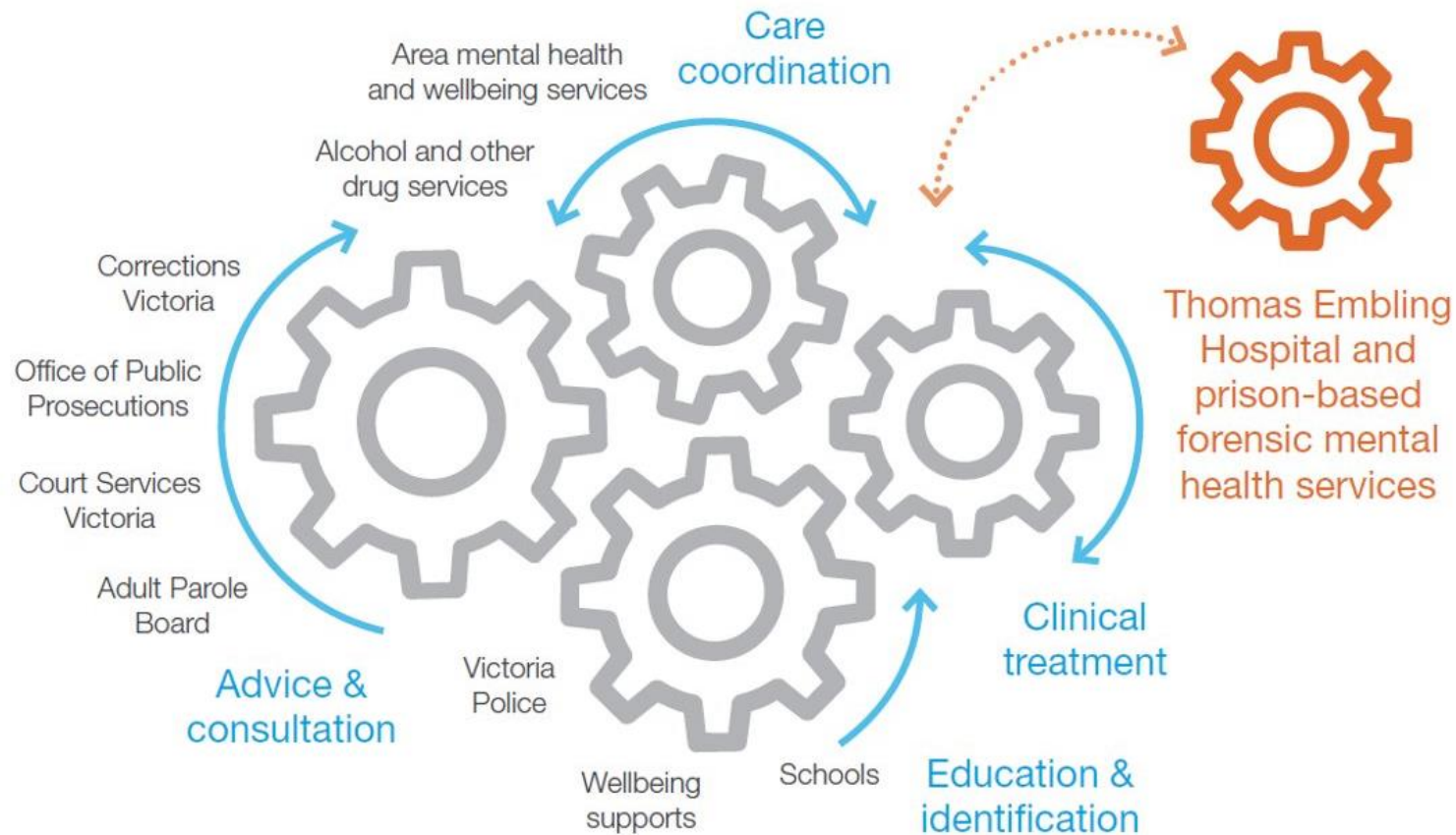
35%

of prisoners with mental illness have been referred to a mental health service in custodial settings





# Forensicare's role in the forensic mental health systems



Forensicare